

Vertical Mast Lifts

ELECTRIC OIL-FREE



ZHEJIANG DINGLI MACHINERY CO., LTD.

ADD:188 Qihang Road, Leidian Town, Deqing, Zhejiang, P.R.C

P.C:313219

Tel:+86-572-8681688

E-Mail:export@cndingli.com

Https://www.cndingli.com

As the technology is constantly updated, technical parameters are subject to change without notice. This brochure is for reference only.
The copyright is owned by Zhejiang Dingli. No content may be copied or plagiarized for any purpose without written permission.
October 2024 edition

DINGLI
Exceed · New Height



Founded in 2005, [Zhejiang Dingli Machinery Co., Ltd.](#) is a leading manufacturer of intelligent aerial work platforms in the world, covering a total area of 710,000 square meters (175.4 acres), with a construction area of 590,000 square meters and an annual output value of more than 10 billion.

Dingli implements the "ESG" concept throughout the whole process of corporate governance, and practices the development strategy of "Green Sustainable Enterprise Ecology" in all aspects, including green travel of employees, green park construction, green manufacturing, green product R&D, and green recycling.

Dingli has R&D centers in Italy, Germany and the USA, and an Enterprise Research Institute in China, owns 265 global patents, including 120 invention patents, 81 foreign patents, 5 computer software copyright registration certificates, Dingli also participates in the formulation of 16 national standards and 9 industry standards, fully realizing technology globalization.

Electrification is a key measure for Dingli to provide customers with green recycling solutions. As a leader of new energy aerial working platforms, Dingli takes the lead in the industry to complete product electrification, and launches a 3-year warranty for the whole series of products. Dingli has realized collaborative, green and safe manufacturing based on the "future factory" with the highest degree of automation in the industry. More than 200 aerial work platforms developed independently have passed the authoritative certifications of CE in Europe and ANSI in the USA, and have been sold to more than 100 countries and regions around the world.

By advocating the efficient use of recycling energy, Dingli has established re-manufacturing factories to provide customers with full life cycle services for products. In order to better convey the global green development concept, Dingli has invested in well-known construction machinery enterprises such as MAGNI (Italy), TEUPEN (Germany), and wholly-owned acquisition of CMEC, a veteran company specialized in AWP in the United States with

more than 50 years of history. In addition, Dingli has established more than ten overseas subsidiaries that configured with local operating team.

Dingli has been recognized as a "National Manufacturing Single Item Champion Demonstration Enterprise" by the Ministry of Industry and Information Technology, been awarded the "IPAF Annual Pioneer of Aerial Work Platforms" and "IAPA Product of the Year Categories - Scissor Lifts & Vertical Masts", making a zero breakthrough in this industry's most prestigious international awards for Chinese manufacturing. Also, Dingli has been awarded "Top 40 Global Construction Machinery Manufacturers". Mr. Xu Shugen, president of the board, is the first Chinese selected as a member of the IAPA judging panel, has been awarded "Zhejiang Merchants of the Year" in 2022 and "100 Influential People in China's Construction Machinery Industry" for consecutive years.

Dingli is also committed to building an equal, diverse and inclusive corporate environment, by actively empowering women to realize gender diversity in all positions in the male-dominated machinery manufacturing industry, respecting different voices to keep team innovative and resilient for a long time, promoting the development of the industry and ushering in a new era of electrification for "Non-Road Mobile Machinery" to lead the green transformation. Meanwhile, Dingli has built a harmonious supply chain, connected upstream and downstream to create the world's only industrial park for aerial work platforms. Dingli has been fulfilling social responsibilities such as the establishment of the "HongDing Fund", practices of voluntary activities, poverty relief, fundraising for disaster relief, etc.

"Green & Sustainability" is the key to Dingli's high-quality development. In the future, the company will continue to upgrade the "future factories", deepen the green and energy-saving strategy, lead the new era of electrification for "Non-Road Mobile Machinery", make "Aerial Work Platforms Made in China" shine internationally.

Vertical/Mast/Order Picker Series

Dingli's indoor dedicated small aerial work platforms include three categories: vertical type, mast type and order pickers, totally more than 20 specifications of products. They are powered by batteries, with oil-free & all-electric type, AC type, etc. With light structure, flexible operation, no noise, and zero emissions, which are specially used in narrow space working environments such as warehouses, supermarkets, hotels, and airports.

Advantages and Features

Electric Vertical Lifts:

With light structure, flexible operation, no noise, no pollution, suitable for narrow space environments such as warehouses and supermarkets.

AC Vertical Lifts:

In addition to the advantages of ordinary vertical lifts, they are equipped with a fully sealed AC system, which has the advantages of being maintenance-free, more waterproof, more efficient and safer.

Oil-Free & All Electric Vertical Lifts:

Electric actuators are used instead of hydraulic cylinders, no hydraulic system. With the characteristics of low energy consumption, greater safety, easier maintenance, greater comfort, and more environmentally friendly.

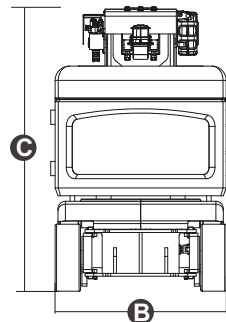
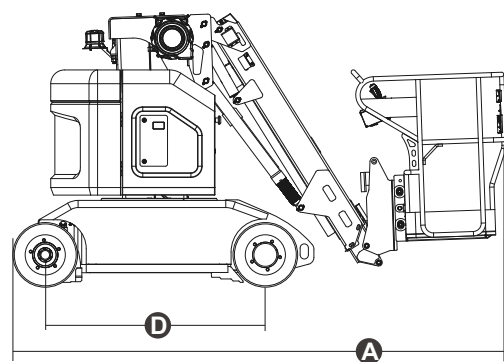
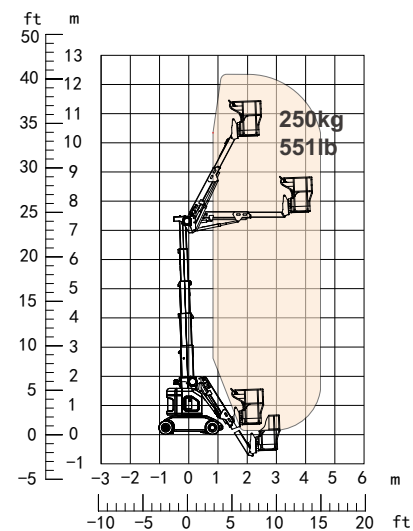
Single/Double-Mast Lifts:

With light structure and flexible operation, suitable for narrow spaces such as warehouses and supermarkets.

Order Pickers:

Easy to move, with light structure and flexible operation, suitable for narrow spaces such as warehouses and supermarkets, making it convenient for pick-up and drop-off.

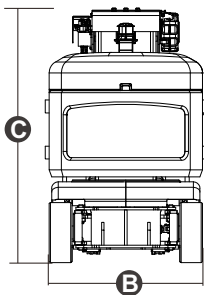
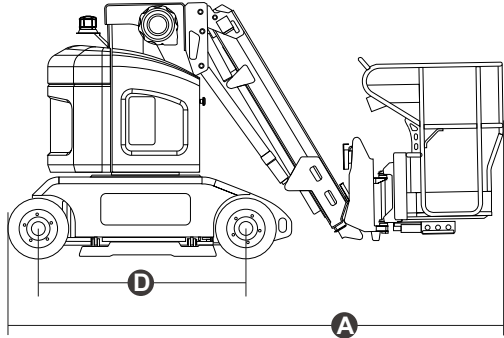
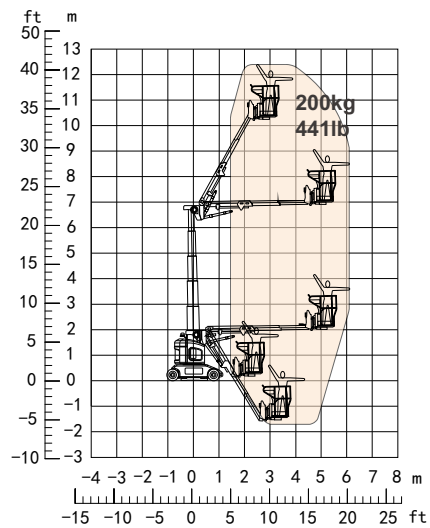


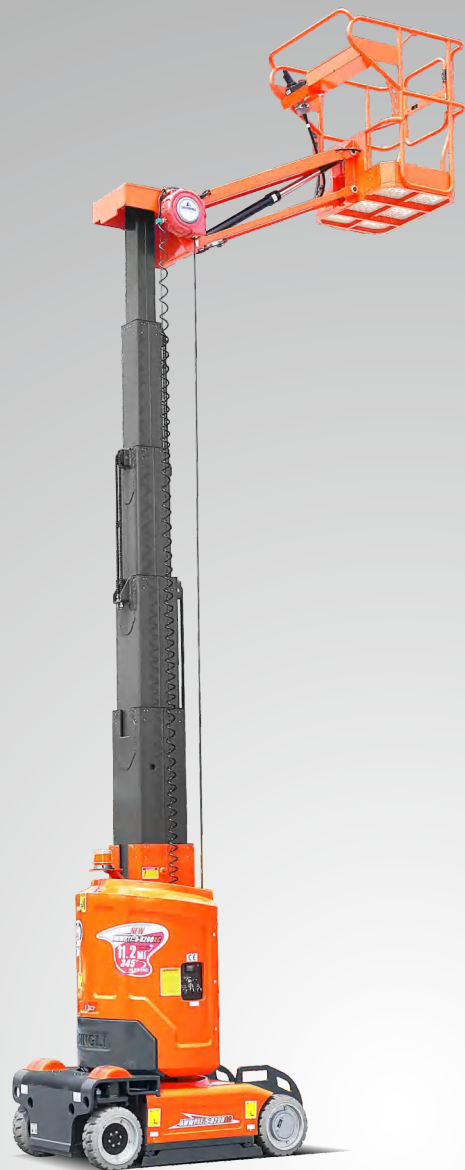


Model		AMWP13-9100
Dimension		
Max. Working Height		12.40m - 40ft 8in
Max. Platform Height		10.40m - 34ft 1in
Overall Length A		3.82m - 12ft 6in
Overall Width B		1.50m - 4ft 11in
Overall Height C		1.99m - 6ft 6in
Max. Horizontal Reach		5.50m - 18ft
Max. Up And Over Clearance		7.00m - 23ft
Platform Size(Length ×Width)		0.75m×1.50m - 2ft 5in×4ft 11in
Ground Clearance(Raised/Stowed)		0.1m/0.015m - 4in/1in
Wheelbase D		1.60m - 5ft 3in
Turning Radius(Inside/Outside)		1.00m/2.80m - 3ft 3in/9ft 2in
Tyres		Φ470×178mm
Performance		
S.W.L		250kg - 551lb
Max. Occupants(Indoor/Outdoor)		2
Gradeability		25%
Travel Speed(Stowed)		≈4.5km/h - ≈2.80mph
Travel Speed(Raised)		≈0.5km/h - ≈0.31mph
Max. Working Slope(X/Y)		2.5°/2.5°
Up/Down Speed		42/37sec
Turret Rotation		345°
Jib Movement		60°~~60°
Platform Rotation		±60°
Weight		
Overall Weight		4970kg - 10957lb
Power		
Lead-Acid Maintenance-Free Battery		48V/200Ah
Charger		48V/35A
Driving Motor		2×32VAC/2.0kW
Lifting Motor		30VAC/5.0kW



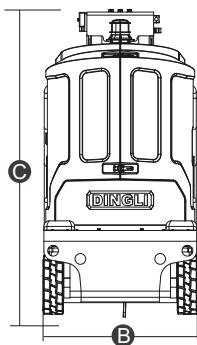
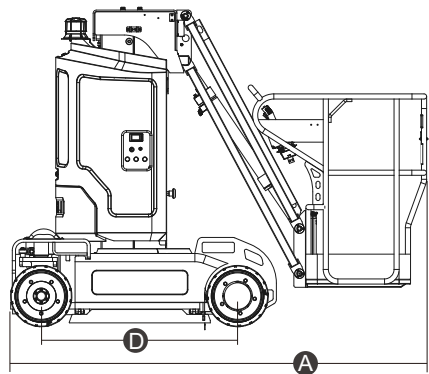
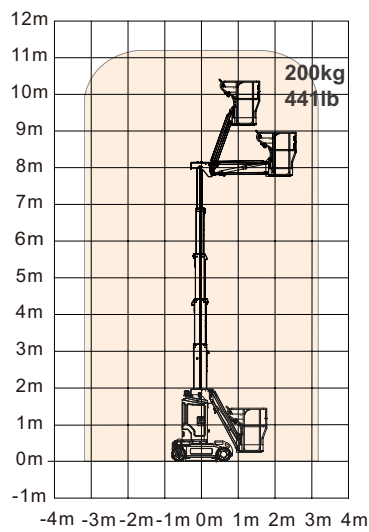
Model		AMWP13-9200
Dimension		
Max. Working Height		12.40m – 40ft 8in
Max. Platform Height		10.40m – 34ft 1in
Overall Length A		3.82m – 12ft 6in
Overall Width B		1.20m – 3ft 11in
Overall Height C		1.99m – 6ft 6in
Max. Horizontal Reach		5.50m – 18ft
Max. Up And Over Clearance		7.00m – 23ft
Platform Size(Length ×Width)		0.69m×0.93m – 2ft 3in×3ft 1in
Ground Clearance		0.015m – 1in
Wheelbase D		1.60m – 5ft 3in
Tailswing		0.15m – 6in
Turning Radius(Inside/Outside)		0.70m/2.50m – 2ft 4in/8ft 2in
Tyres		Φ470×178mm
Performance		
S.W.L		200kg – 441lb
Max. Occupants(Indoor/Outdoor)		2/1
Gradeability		25%
Travel Speed(Stowed)		≈4.5km/h – ≈2.80mph
Travel Speed(Raised)		≈0.5km/h – ≈0.31mph
Max. Working Slope(X/Y)		2.5°/2.5°
Up/Down Speed		42/37sec
Turret Rotation		345°
Jib Movement		60°~ -60°
Platform Rotation		±60°
Weight		
Overall Weight		4920kg – 10847lb
Power		
Lead-Acid Maintenance-Free Battery		48V/200Ah
Charger		48V/35A
Driving Motor		2×32VAC/2.0kW
Lifting Motor		30VAC/5.0kW

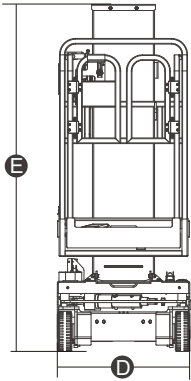
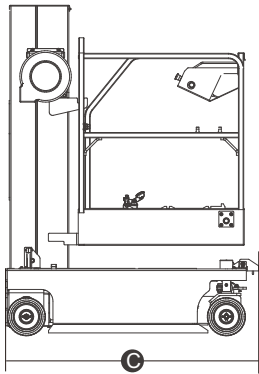
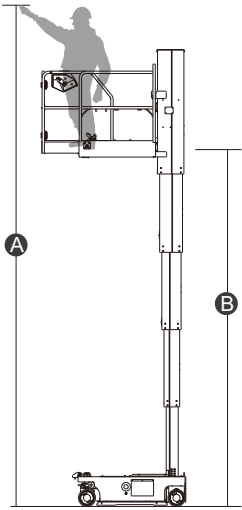




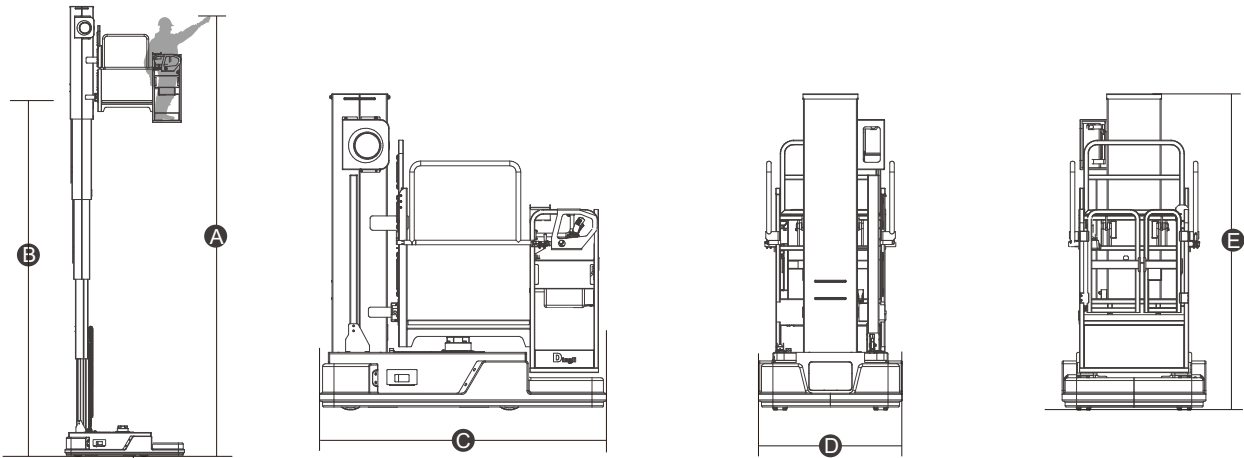
Model	AMWP 11.5-8200AC
Dimension	
Max. Working Height	11.20m - 36ft 9in
Max. Platform Height	9.20m - 30ft 2in
Overall Length A	2.62m - 8ft 7in
Overall Width B	1.00m - 3ft 3in
Overall Height C	1.99m - 6ft 6in
Platform Size(Length ×Width)	0.69m×0.93m - 2ft 3in×3ft 1in
Ground Clearance(Stowed)	0.07m - 3in
Ground Clearance(Raised)	0.02m - 1in
Wheelbase D	1.22m - 4ft
Turning Radius(Inside/Outside)	0/1.80m - 0in/5ft 11in
Tyres	Φ381×127mm
Performance	
S.W.L	200kg - 440lb
Max. Occupants(Indoor/Outdoor)	2/1
Gradeability	25%
Travel Speed(Stowed)	≈5.0km/h - ≈3.11mph
Travel Speed(Raised)	≈0.5km/h - ≈0.31mph
Max. Working Slope(X/Y)	2.5°/2.5°
Up/Down Speed	42/38sec
Turret Rotation	345°
Jib Movement	+70°/-60°
Weight	
Overall Weight	2970kg - 6548lb
Power	
Lead-Acid Maintenance-Free Battery	24V/200Ah
Lithium Battery ★	24V/180Ah
Charger	24VDC/30A
Driving Motor	2×15VAC/0.87kW
Lifting Motor	15VAC/3kW

Note: Parameters marked with “★” are optional items.

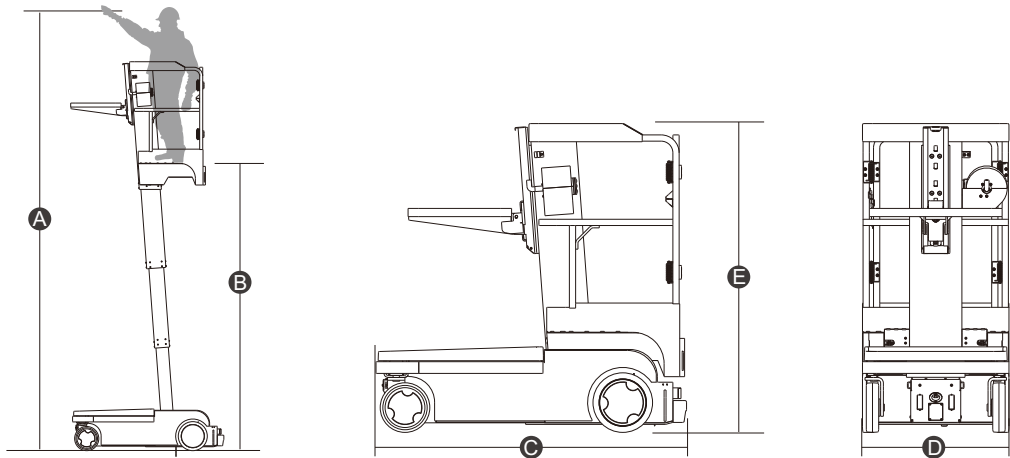




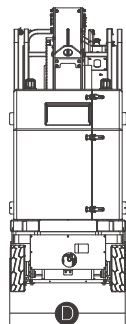
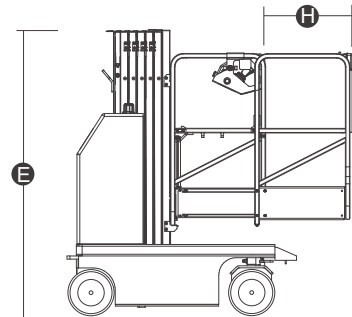
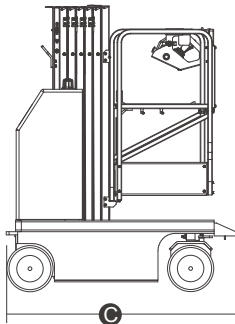
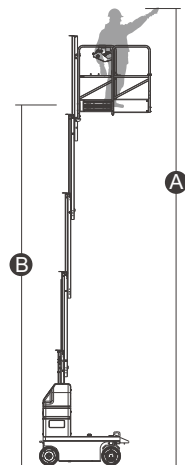
Model		AMWP8-8100L
Dimension		
Max. Working Height A	7.60m - 24ft 11in	
Max. Platform Height B	5.60m - 18ft 4in	
Overall Length C	1.63m - 5ft 4in	
Overall Width D	0.80m - 2ft 7in	
Overall Height E	1.99m - 6ft 6in	
Platform Size(Length ×Width)	1.03×0.76m - 3ft 4in×2ft 6in	
Platform Extension Size	0.50m - 1ft 8in	
Ground Clearance(Stowed)	0.06m - 2in	
Ground Clearance(Raised)	0.014m - 1in	
Wheelbase	1.21m - 4ft	
Turning Radius(Inside/Outside)	0.60m/1.80m - 2ft/5ft 11in	
Tyres	Φ230×100mm	
Performance		
S.W.L	227kg - 500lb	
S.W.L on Extension	113kg - 249lb	
Max. Occupants(Indoor/Outdoor)	2/0	
Gradeability	25%	
Travel Speed(Stowed)	≈3.6km/h - ≈2.24mph	
Travel Speed(Raised)	≈0.5km/h - ≈0.31mph	
Max. Working Slope(X/Y)	1.5°/3°	
Up/Down Speed	32/32sec	
Weight		
Overall Weight	1310kg - 2888lb	
Power		
Lead-Acid Maintenance-Free Battery	2×12V/115Ah	
Charger	24V/15A	
Driving Motor	2×15VAC/0.68kW	
Lifting Motor	24VDC/1.4kW	



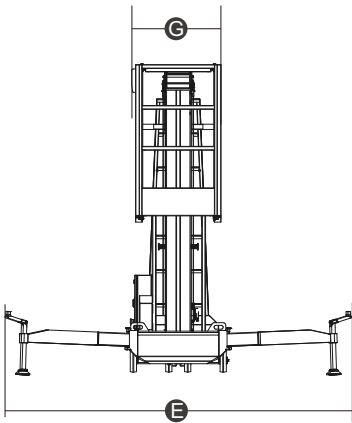
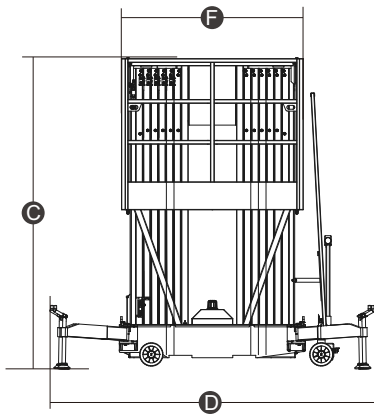
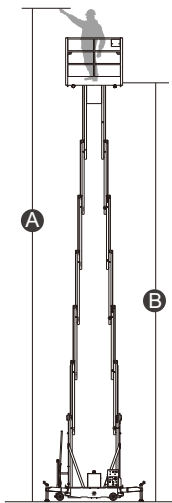
Model		AMWP8-3100
Dimension		
Max. Working Height	A	7.60m – 24ft 11in
Max. Platform Height	B	5.60m – 18ft 4in
Overall Length	C	2.00m – 6ft 7in
Overall Width	D	1.00m – 3ft 3in
Overall Height	E	2.20m – 7ft 3in
Platform Size(Length ×Width)		1.39×0.76m – 4ft 7in×2ft 6in
Ground Clearance(Stowed)		0.018m – 1in
Wheelbase		1.10m – 3ft 7in
Turning Radius(Inside/Outside)		0.60m/1.80m – 2ft/5ft 11in
Tyres		Φ230×100mm
Performance		
S.W.L		272kg – 600lb
Max. Occupants(Indoor/Outdoor)		1/0
Travel Speed(Stowed)		≠ 3.6km/h – ≠ 2.24mph
Travel Speed(Raised)		≠ 0.5km/h – ≠ 0.31mph
Max. Working Slope(X/Y)		1.5°/3°
Up/Down Speed		34/34sec
Weight		
Overall Weight		1380kg – 3042lb
Power		
Lead-Acid Maintenance-Free Battery		2x12V/115Ah
Charger		24V/15A
Driving Motor		2x15VAC/0.68kW
Lifting Motor		24VDC/1.4kW



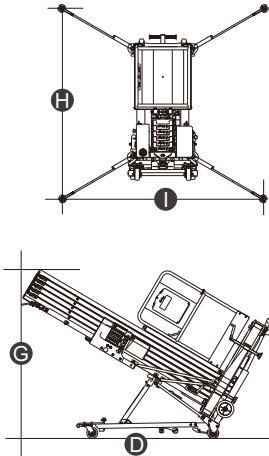
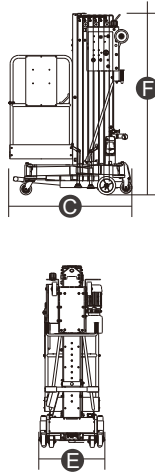
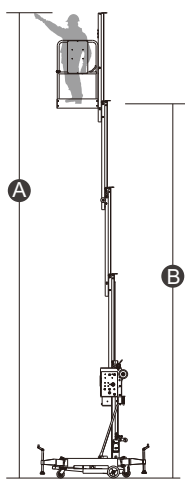
Model	OPT0507
Dimension	
Max. Working Height A	4.99m - 16ft 4in
Max. Platform Height B	2.99m - 9ft 10in
Overall Length C	1.59m - 5ft 3in
Overall Width D	0.75m - 2ft 5in
Overall Height E	1.59m - 5ft 3in
Ground Clearance	0.04m - 2in
Wheelbase	1.11m - 3ft 8in
Turning Radius(Inside/Outside)	0/1.3m - 0/4ft 3in
Tyres(Front)	Φ254×63.5mm
Tyres(Drive Motors)	Φ305×63.5mm
Performance	
S.W.L Of Platform(For Person)	135kg - 297lb
S.W.L Of Pallet(For Goods-Up)	90kg - 198lb
S.W.L Of Pallet(For Goods-Down)	115kg - 253lb
Max. Occupants(Indoor/Outdoor)	1/0
Forward Speed(Stowed)	≈ 4.8km/h - ≈ 2.98mph
Back Speed(Stowed)	≈ 3.2km/h - ≈ 1.98mph
Travel Speed(Raised)	≈ 1.3km/h - ≈ 0.80mph
Up/Down Speed	18/18sec
Gradeability	15%
Weight	
Overall Weight	660kg - 1455lb
Power	
Lead-Acid Maintenance-Free Battery	24V/115Ah
Charger	24V/15A
Driving Motor	2×15VAC/0.68kW
Lifting Motor	24VDC/1.4kW



Model	AMWP9.5-1200	AMWP8-1200
Dimension		
Max. Working Height A	9.50m – 31ft 2in	8.00m – 26ft 3in
Max. Platform Height B	7.50m – 24ft 7in	6.00m – 19ft 8in
Overall Length C	1.44m – 4ft 9in	1.39m – 4ft 7in
Overall Width D	0.8m – 2ft 7in	0.76m – 2ft 6in
Overall Height E	1.99m – 6ft 6in	1.99m – 6ft 6in
Platform Size(Length ×Width)	0.75×0.73m – 2ft 5in×2ft 5in	0.75×0.73m – 2ft 5in×2ft 5in
Platform Extension Size H	0.53m – 1ft 9in	0.53m – 1ft 9in
Ground Clearance(Stowed)	0.06m – 2in	0.06m – 2in
Ground Clearance(Raised)	0.014m – 1in	0.014m – 1in
Wheelbase	1.12m – 3ft 8in	1.07m – 3ft 6in
Turning Radius(Inside/Outside)	0/1.58m – 0/5ft 2in	0/1.55m – 0/5ft 1in
Tyres	Φ323×100mm	Φ323×100mm
Performance		
S.W.L	136kg – 299lb	159kg – 350lb
S.W.L on Extension	136kg – 299lb	159kg – 350lb
Max. Occupants(Indoor/Outdoor)	1/0	1/0
Gradeability	25%	25%
Travel Speed(Stowed)	≈4.0km/h – ≈2.48mph	≈4.0km/h – ≈2.48mph
Travel Speed(Raised)	≈0.6km/h – ≈0.37mph	≈0.6km/h – ≈0.37mph
Max. Working Slope(X/Y)	1.5°/3°	1.5°/3°
Up/Down Speed	29/32sec	23/25sec
Weight		
Overall Weight	1560kg – 3439lb	1310kg – 2888lb
Power		
Lead-Acid Maintenance-Free Battery	24V/115Ah	24V/115Ah
Charger	24VDC/15A	24VDC/15A
Driving Motor	2×24VDC/1kW	2×24VDC/1kW
Lifting Motor	24VDC/2kW	24VDC/2kW



Model	GTWY14-2100	GTWY12.5-2100	GTWY11-2100	GTWY9.5-2100
Dimension				
Max. Working Height A	14.00m - 45ft 11in	12.50m - 41ft	11.00m - 36ft 1in	9.50m - 31ft 2in
Max. Platform Height B	12.00m - 39ft 4in	10.50m - 34ft 5in	9.00m - 29ft 6in	7.50m - 24ft 7in
Overall Length(Stowed)	1.69m - 5ft 6in	1.69m - 5ft 6in	1.69m - 5ft 6in	1.56m - 5ft 1in
Overall Width(Stowed)	0.82m - 2ft 8in	0.82m - 2ft 8in	0.82m - 2ft 8in	0.82m - 2ft 8in
Overall Height(Stowed) C	2.37m - 7ft 9in	1.99m - 6ft 6in	1.99m - 6ft 6in	1.99m - 6ft 6in
Outrigger Footprint D × E	2.31m×2.39m - 7ft 7in×7ft 10in	2.31m×2.39m - 7ft 7in×7ft 10in	2.31m×2.39m - 7ft 7in×7ft 10in	1.76m×1.66m - 5ft 9in×5ft 5in
Platform Size F × G	1.40m×0.65m - 4ft 7in×2ft 2in	1.40m×0.65m - 4ft 7in×2ft 2in	1.40m×0.65m - 4ft 7in×2ft 2in	1.27m×0.65m - 4ft 2in×2ft 2in
Ground Clearance	0.055m - 2in	0.055m - 2in	0.055m - 2in	0.055m - 2in
Tyres(Front)	Φ180×50mm	Φ180×50mm	Φ180×50mm	Φ180×50mm
Tyres(Back)	Φ180×50mm	Φ180×50mm	Φ180×50mm	Φ180×50mm
Performance				
S.W.L	200kg - 440lb	250kg - 551lb	300kg - 661lb	300kg - 661lb
Max. Occupants (Indoor/Outdoor)	2/0	2/0	2/0	2/0
Up/Down Speed	75/45sec	62/42sec	62/40sec	55/38sec
Weight				
Overall Weight - AC	1020kg - 2248lb	820kg - 1807lb	780kg - 1719lb	630kg - 1388lb
Overall Weight - DC	1080kg - 2380lb	880kg - 1940lb	840kg - 1851lb	689kg - 1518lb
Power				
Lead-Acid Maintenance-Free Battery	12V/170Ah	12V/170Ah	12V/170Ah	12V/170Ah
Charger	12VDC/30A	12VDC/30A	12VDC/30A	12VDC/30A
Lifting Motor-AC	220VAC/1.5kW	220VAC/1.5kW	220VAC/1.5kW	220VAC/1.5kW
Lifting Motor-DC	12VDC/2.5kW	12VDC/2.5kW	12VDC/2.5kW	12VDC/2.5kW

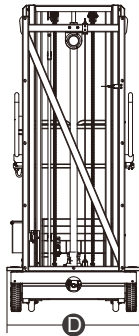
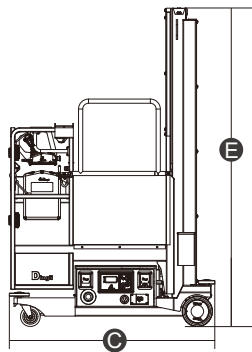
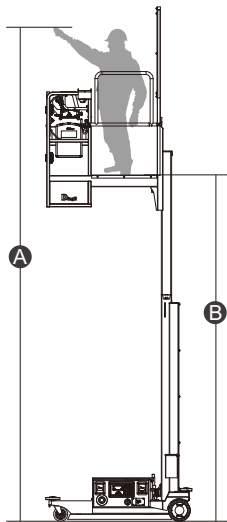


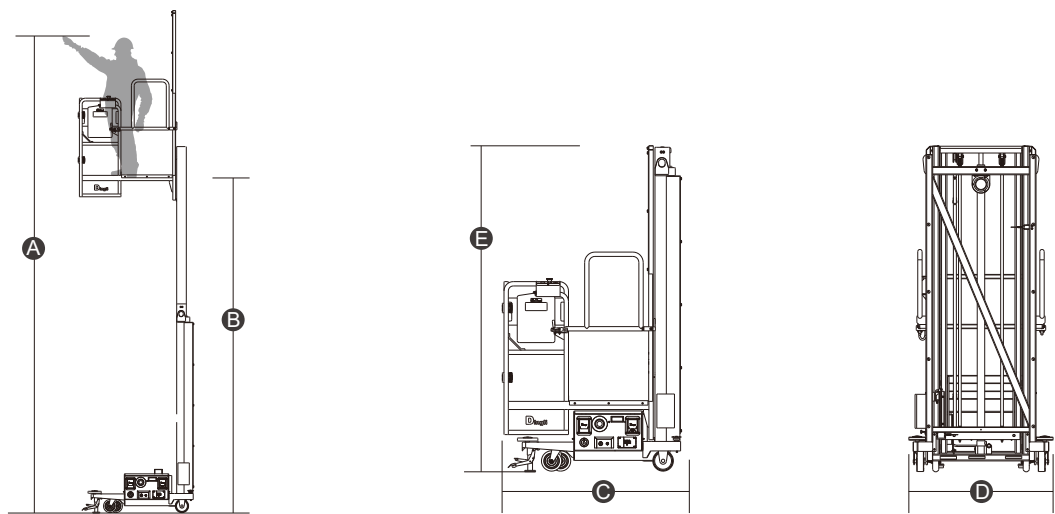
(Only For GTWY12.5/14-1300)

Model	GTWY14-1300	GTWY12.5-1300	GTWY11-1300	GTWY9.5-1300
Dimension				
Max. Working Height A	14.00m – 45ft 11in	12.50m – 41ft	11.00m – 36ft 1in	9.50m – 31ft 2in
Max. Platform Height B	12.00m – 39ft 4in	10.50m – 34ft 5in	9.00m – 29ft 6in	7.50m – 24ft 7in
Overall Length(Stowed) C	1.53m – 5ft	1.53m – 5ft	1.34m – 4ft 5in	1.30m – 4ft 3in
Overall Length(Tilted Back) D	2.95m – 9ft 8in	2.63m – 8ft 7in	/	/
Overall Width E	0.75m – 2ft 5in	0.75m – 2ft 5in	0.75m – 2ft 5in	0.75m – 2ft 5in
Overall Height(Stowed) F	2.77m – 9ft 1in	2.35m – 7ft 8in	1.99m – 6ft 6in	1.99m – 6ft 6in
Overall Height(Tilted Back) G	1.95m – 6ft 5in	1.70m – 5ft 7in	/	/
Outrigger Footprint(H / I)	2.08/2.15m – 6ft 10in/7ft 1in	2.08/2.15m – 6ft 10in/7ft 1in	1.70/1.86m – 5ft 7in/6ft 1in	1.70/1.86m – 5ft 7in/6ft 1in
Platform Size(Length×Width)	0.70×0.60m – 2ft 4in×2ft	0.70×0.60m – 2ft 4in×2ft	0.70×0.60m – 2ft 4in×2ft	0.70×0.60m – 2ft 4in×2ft
Ground Clearance	0.055m – 2in	0.055m – 2in	0.055m – 2in	0.055m – 2in
Tyres(Front)	Φ127×50mm	Φ127×50mm	Φ127×50mm	Φ127×50mm
Tyres(Back)	Φ203×50mm	Φ203×50mm	Φ203×50mm	Φ203×50mm
Performance				
S.W.L	136kg – 299lb	150kg – 330lb	150kg – 330lb	150kg – 330lb
Max. Occupants (Indoor/Outdoor)	1/0	1/0	1/0	1/0
Up/Down Speed	45/29sec	40/26sec	34/22sec	28/18sec
Weight				
Overall Weight - AC	570kg – 1256lb	530kg – 1168lb	450kg – 992lb	430kg – 947lb
Overall Weight - DC	600kg – 1322lb	560kg – 1234lb	470kg – 1036lb	453kg – 998lb
Power				
Lead-Acid Maintenance-Free Battery	12V/85Ah	12V/85Ah	12V/85Ah	12V/85Ah
Charger	12VDC/15A	12VDC/15A	12VDC/15A	12VDC/15A
Lifting Motor-AC	220VAC/1.5kW	220VAC/1.5kW	220VAC/1.5kW	220VAC/1.5kW
Lifting Motor-DC	12VDC/1.5kW	12VDC/1.5kW	12VDC/1.5kW	12VDC/1.5kW



Model	ZDYT 3-4.8S	ZDYT 3-4.5S	ZDYT 3-3.7S
Dimension			
Max. Working Height A	6.80m - 22ft 4in	6.50m - 21ft 4in	5.70m - 18ft 8in
Max. Platform Height B	4.80m - 15ft 9in	4.50m - 14ft 9in	3.70m - 12ft 2in
Overall Length C	1.59m - 5ft 3in	1.59m - 5ft 3in	1.56m - 5ft 1in
Overall Width D	1.06m - 3ft 6in	1.06m - 3ft 6in	1.06m - 3ft 6in
Overall Height E	2.38m - 7ft 10in	2.28m - 7ft 6in	2.42m - 7ft 11in
Platform Size(Length ×Width)	1.18m×0.80m - 3ft 10in×2ft 7in	1.18m×0.80m - 3ft 10in×2ft 7in	1.18m×0.80m - 3ft 10in×2ft 7in
Ground Clearance	0.08m - 3in	0.08m - 3in	0.08m - 3in
Wheelbase	1.30m - 4ft 3in	1.30m - 4ft 3in	1.27m - 4ft 2in
Tyres(Front)	6in	6in	6in
Tyres(Back)	Φ230×80mm	Φ230×80mm	Φ230×80mm
Performance			
S.W.L	300kg - 661lb	300kg - 661lb	300kg - 661lb
Max. Occupants(Indoor/Outdoor)	1/0	1/0	1/0
Travel Speed(Stowed)	≈ 4.0km/h - ≈ 2.48mph	≈ 4.0km/h - ≈ 2.48mph	≈ 4.0km/h - ≈ 2.48mph
Travel Speed(Raised)	≈ 0.8km/h - ≈ 0.49mph	≈ 0.8km/h - ≈ 0.49mph	≈ 0.8km/h - ≈ 0.49mph
Up/Down Speed	21/18sec	20/17sec	22/19sec
Gradeability	25%	25%	25%
Max. Working Slope(X/Y)	1.5°/2°	1.5°/2°	1.5°/2°
Weight			
Overall Weight	855kg - 1885lb	840kg - 1851lb	720kg - 1587lb
Power			
Lead-Acid Maintenance-Free Battery	24V/105Ah	24V/105Ah	24V/105Ah
Charger	24V/30A	24V/30A	24V/30A
Driving Motor	24V/0.4kW	24V/0.4kW	24V/0.4kW
Lifting Motor	24V/2.2kW	24V/2.2kW	24V/2.2kW





Model	DYT 2-4.5S	DYT 2-3.7SW	DYT 2-2.7S
Dimension			
Max. Working Height A	6.50m – 21ft4in	5.70m – 18ft8in	4.70m – 15ft5in
Max. Platform Height B	4.50m – 14ft9in	3.70m – 12ft2in	2.70m – 8ft 10in
Overall Length C	1.42m – 4ft8in	1.38m – 4ft6in	1.38m – 4ft6in
Overall Width D	1.08m – 3ft6in	1.06m – 3ft6in	1.06m – 3ft6in
Overall Height E	2.28m – 7ft6in	2.39m – 7ft 10in	1.89m – 6ft2in
Platform Size(Length ×Width)	1.11m×0.80m – 3ft8in×2ft7in	1.11m×0.80m – 3ft8in×2ft7in	1.11m×0.80m – 3ft8in×2ft7in
Ground Clearance	0.08m – 3in	0.08m – 3in	0.08m – 3in
Wheelbase	0.95m – 3ft	0.92m – 3ft	0.92m – 3ft
Tyres(Front)	6in	6in	6in
Tyres(Back)	Φ152×55mm	Φ152×55mm	Φ152×55mm
Performance			
S.W.L	300kg – 661lb	300kg – 661lb	300kg – 661lb
Max. Occupants(Indoor/Outdoor)	1/0	1/0	1/0
Up/Down Speed	30/17sec	33/18sec	22/12sec
Max. Working Slope(X/Y)	1°/1°	1°/1°	1°/1°
Weight			
Overall Weight	700kg – 1543lb	580kg – 1279lb	500kg – 1102lb
Power			
Lead-Acid Maintenance-Free Battery	12V/85Ah	12V/85Ah	12V/85Ah
Charger	12V/30A	12V/30A	12V/30A
Lifting Motor	12V/1.6kW	12V/1.6kW	12V/1.6kW